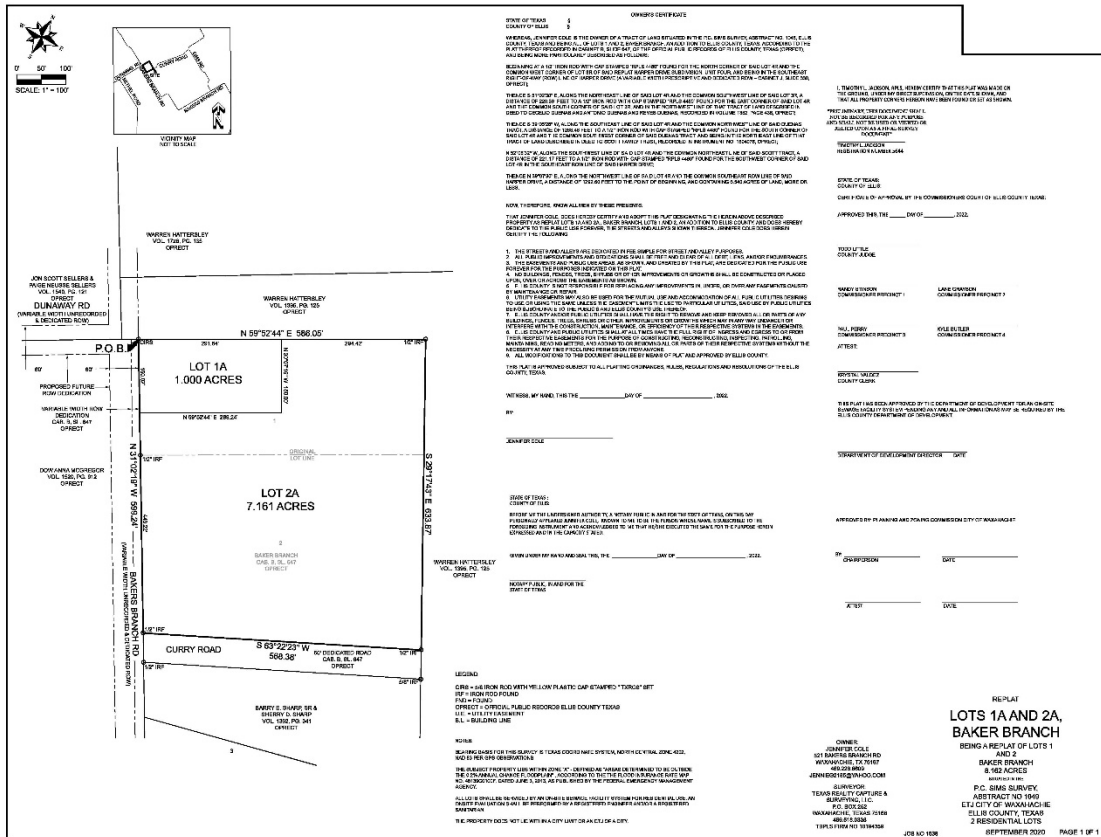




Public Notice - Replat Request

The Ellis County Commissioners' Court will consider and act upon a replat application for **Lots 1A & 2A, Baker Branch** to adjust the current lot line. The property contains ± 8.162 acres of land in the P.C. Sims Survey, Abstract No. 1049, located on the east side of Bakers Branch Road, ± 342 feet north of the intersection of Bakers Branch Road and Curry Road, in the extraterritorial jurisdiction (ETJ) of Maypearl, Road and Bridge Precinct No. 3. A copy of the replat request is shown below.



The replat will be presented before the Commissioners' Court on Tuesday, **August 23, 2022, at 2:00 PM** on the second floor of the historic Ellis County Courthouse, 101 West Main Street, Waxahachie, TX. 75165. Please direct any questions to the Department of Development at 972-825-5200, or by email at dod@co.ellis.tx.us.